



BIOSTATISTICS SEMINARS

All seminars are held from 4PM – 5PM
485 Lexington Ave, Conference Room B (2137)

- ❖ October 14, 2015 [Tianxi Cai](#)
Harvard University
- ❖ October 21, 2015 [Pamela Shaw](#)
University of Pennsylvania
- ❖ October 28, 2015 [Marinela Capanu](#)
MSK
- ❖ November 4, 2015 [Malcolm Pike](#)
MSK
- ❖ November 18, 2015 [Alexia Iasonos](#)
MSK
- ❖ December 2, 2015 [Glen Heller](#)
MSK
- ❖ December 9, 2015 [Mary Redman](#)
University of Washington
- ❖ December 16, 2015 [Hui Jiang](#)
University of Michigan

HEALTH OUTCOMES

RESEARCH GROUP SEMINARS

All seminars are held from 12PM – 1PM
485 Lexington Ave, Conference Room B (2137)

- ❖ October 16, 2015 [Elena Elkin](#)
MSK
- ❖ October 30, 2015 [Talya Salz](#)
MSK
- ❖ November 13, 2015 [Victoria Blinder](#)
MSK
- ❖ December 4, 2015 [Dawn Hershman](#)
Columbia University
- ❖ December 11, 2015 [Andrew Vickers](#)
MSK

SURVIVORSHIP, OUTCOMES AND RISK PROGRAM SEMINAR SERIES

All seminars are held from 4PM – 5PM
1275 York Ave, M-107

- ❖ October 13, 2015 [Andrew L. Salner](#)
*Director, Helen & Harry Gray Cancer Center, Hartford Hospital
Medical Director of Radiation Oncology, Hartford Hospital*
- ❖ November 10, 2015 [Peter A. Ubel](#)
*Associate Director, Health Sector Management and Madge and Dennis T. McLawhorn University Professor
Duke University: The Fuqua School of Business*
- ❖ December 8, 2015 [Deborah Schrag](#)
*Chief, Division of Population Sciences, Department of Medical Oncology
Dana-Farber Cancer Institute; Professor of Medicine, Harvard Medical School*



DEPARTMENT CHAIR

Colin Begg, PhD

EDITORS

Sharon Bayuga, MPH
Prusha Patel, MPH
Narre Heon
Lauren Rogak, MA
Mary Shaw
Amethyst Saldia
Shireen Lewis
Joseph Kanik

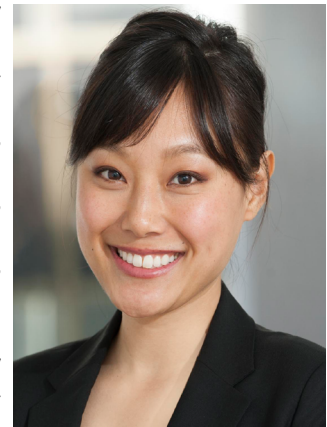
WELCOME NEW INVESTIGATORS

In September, [Elizabeth Kantor PhD](#) joined the Department of Epidemiology and Biostatistics as an Assistant Attending Epidemiologist. Elizabeth’s research interests largely center on chemoprevention and understanding the biologic mechanisms by which drugs and supplements may affect cancer risk. Additional areas of interest include the role of obesity and inflammation in cancer etiology and survival, as well as the use of biomarkers in epidemiologic research. Before moving to New York, Elizabeth completed her postdoctoral training at the Harvard T.H. Chan School of Public Health, her PhD in Epidemiology at the University of Washington, and her MPH in International Health Epidemiology at the University of Michigan.



Elizabeth Kantor, PhD

[Margaret Du](#) recently joined the Department of Epidemiology and Biostatistics as an Assistant Attending Epidemiologist. Her primary research aims to identify genetic and modifiable predictors of colorectal cancer and cancer-related traits, with the goal of better understanding tumorigenesis and informing improved preventive strategies. She is an investigator in two international consortia—the Genetics and Epidemiology of Colorectal Cancer Consortium and the Exome Sequencing Project — where she examines inherited genomic variation along with various lifestyle, anthropometric, and pharmacological factors in relation to colorectal cancer development, body weight, and body height. Margaret is also an investigator in two large nationwide cohorts of women’s health—the Nurses’ Health Study (NHS) and Women’s Health Initiative (WHI)—where she studied genetics, biomarkers, and physical activity in relation to endometrial and skin cancer development as well as telomere length. In WHI, she is leading an ongoing pilot project to collect and comprehensively characterize somatic DNA mutations in recurrent and metastatic colorectal tumors. Margaret received her doctorate of science in epidemiology from Harvard University, and performed her postdoctoral training at the Fred Hutchinson Cancer Research Center. She is excited to join MSK, and looks forward to forming new collaborations.



Margaret Du, PhD

FUNDING SUCCESS

[Alexia Iasonos](#) is the Director for the Biostatistics Core of a P01: “Immunologic Approaches to Ovarian Cancer”. The primary investigator of the project is David Spriggs (Medical Oncologist in gynecology and Head, Division of Solid Tumor Oncology; Winthrop Rockefeller Chair of Medical Oncology). The overall goal of this project is to improve the treatment of patients with ovarian cancer and this effort involves a multidisciplinary team of scientists, radiochemists, immunologists, medical oncologists, and surgeons in gynecology and experts from other disciplines. [Qin \(Christine\) Zhou](#) is part of this team.

[Ronglai Shen](#) is the principal investigator on an R21, with joint PIs Jorge Reis-Filho (Attending Pathologist) and Britta Weigelt (Assistant Attending Pathologist) at MSK: “Defining a novel subtype of luminal-TP53 mutant breast cancer with poor prognosis”. This project will characterize and define the reproducibility and clinical relevance of a novel breast cancer subtype identified from an integrative analysis of the TCGA pan-cancer cohort by combing computational approaches and molecular pathological methods in MSK patient samples.

[Ronglai Shen](#) is the subcontract PI of a Movember Foundation-Prostate Cancer Foundation Challenge Award: “Integrative Genomics of Prostate Cancer Progression”. Co-led by Mark Rubin (Cornell) and Scott Tomlins (University of Michigan), the project will collect primary and metastatic prostate tumor pairs by leveraging the existing Stand Up 2 Cancer/Prostate Cancer Foundation funded clinical trial resources and to perform whole-exome sequencing, targeted RNA sequencing along with comprehensive pathological reviews to identify molecular predictors of progression to metastatic disease

EPIDEMIOLOGY SERVICE MEETINGS

Unless noted, all meetings will be held at 485 Lexington Ave, 2nd Floor, Conference Room B (2137) from 12:00pm – 1:00pm.

- ❖ October 8, 2015
10:30am-11:30am
Diana Buist
Group Health Research Institute
“Collaborative opportunities for conducting research in the Cancer Research Network: Examples and Research Resources”
- ❖ October 12, 2015
Sara H. Olson
MSK
“Oral Microbiome and Pancreatic Cancer; Work in Progress”
- ❖ October 26, 2015
Malcolm Pike
MSK
“Replacing tubal ligation with Fallopian tube removal and prevention of ovarian cancer”
- ❖ November 9, 2015
Margaret Du
MSK
- ❖ December 7, 2015
Julia Sisti
MSK

STAFF PROMOTIONS

- ❖ **Joanne Chou** promoted to Research Biostatistician II
- ❖ **Debra Goldman** promoted to Research Biostatistician
- ❖ **Deborah Kuk** promoted to Research Biostatistician II
- ❖ **Amy Tin** promoted to Data Analyst II

STAFF ACHIEVEMENTS

CONGRATULATIONS TO OUR COLLEAGUES FOR THEIR YEARS OF MSK SERVICE! THE FOLLOWING EMPLOYEES WILL BE RECEIVING THEIR SERVICE AWARDS THIS QUARTER:

- ❖ **Li-Xuan Qin** - 10 years
- ❖ **Meghan Woods** - 10 years
- ❖ **Christine Zhou** - 10 years
- ❖ **Wes Fang** - 10 years
- ❖ **Qinfei Wu** - 15 years
- ❖ **Jaya Satagopan** - 20 years
- ❖ **Venkat Seshan** - 20 years
- ❖ **Jun Yan** - 20 years

RESTAURANT RECOMMENDATIONS

UrbanSpace: a large new food hall with numerous vendors with a wide variety of offerings including Asiadog, Red Hook Lobster Pound, La Palapa, Roberta's, Two Tablespoons, Delaney Chicken, Dough, and more! *Corner of 45th St and Vanderbilt Ave*

MeltKraft: grilled cheese sandwiches with creative fillings like brisket and macaroni and cheese, or green tomatoes and BBQ chips. Try one cooked in duck fat! Boylan's soda is on tap and milkshakes are also served. *151 E 43rd St*

NEW STAFF

Christine Chien, Data Analyst

Christine is excited to join the department as a member of Andrew Vicker's team. She recently graduated from Princeton University with a degree in Computer Science and a certificate in Engineering Biology. She will be primarily working on the Webcore and Amplio software.



Kristen Cunanan, Postdoctoral Research Fellow

Kristen has joined the department as a postdoctoral Research Fellow working with Mithat Gonen. She will primarily work on methodology in Phase II trial designs for subpopulations, with collaborative work in Radiology. She graduated in August with a doctorate in Biostatistics from the University of Minnesota, where her dissertation work focused on Bayesian adaptive methods for early phase cancer trials



Xiu Zhen Fang, Research Study Assistant I

Xiu holds Bachelors of Arts in Psychology and Biology from Georgetown University. She has previously worked as a medical interpreter at NYU Hospital for Joint Disease and Just Interpretation and a research volunteer for Dr. Joseph Lane and the Hospital for Special Surgery. Xiu will be working on Victoria Blinder's Breast Cancer and the Workforce study.



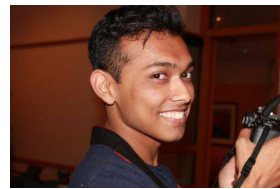
Zachary Helms, Data Assistant

Zach joins our department as a data assistant working with Peter Bach. He recently graduated from the University of Central Arkansas where he studied economics with an emphasis on international trade. Previously, he worked as a policy analyst at the Arkansas Center for Research in Economics.



Sami Noor, Epidemiology Research Secretary

Sami is a recent graduate from Clark University where he studied International Development and Social Change with a focus on Global/Public Health. He has previously worked with Dr. Atul Gawande in Ariadne Labs at the Harvard School of Public Health, and interned at the Global Health Corps last summer.



Dyanna Soto, Research Study Assistant I

Dyanna completed a BA in Biology at New York University in May 2015. She previously volunteered at Clínica Guayaquil de Ecuador, Beth Israel Medical Center (NY), Hospital Luis Vernaza (Ecuador), and most recently as a Research Assistant in the Department of Oncological Sciences at Mt Sinai Icahn School of Medicine. Dyanna joins Victoria Blinder's Breast Cancer and the Workforce study team.



Kalin Stovall, Data Analyst

Kalin has joined our department as a data analyst for Andrew Vickers' team. She recently graduated from Princeton University with a BA in Biology. Previously, she worked as a research assistant for a mangrove conservancy project in Honduras and for an AIDS organization in Uganda.



PUBLICATIONS

[Prognostic and Predictive Values and Statistical Interactions in the Era of Targeted Treatment](#)

[Jaya Satagopan](#), **[Alexia Iasonos](#)** and **[Qin Zhou](#)** published a manuscript in Genetic Epidemiology reporting the Clinical outcome of individuals receiving certain intervention or treatment may vary depending upon their genetic profile. In other words, different individuals respond in different ways to the same treatment or preventive intervention, and genetic factors play a role on these inter-individual differences. Therefore, there is considerable interest in evaluating statistical interactions to obtain insights into prognostic and predictive genetic factors. The objective of our paper is to examine the relationship between interaction terms in statistical models and prognostic and predictive values. This work was presented at the 2105 JSM in Seattle.

[Validity and Reliability of the US National Cancer Institute's Patient-Reported Outcomes Version of the Common Terminology Criteria for Adverse Events \(PRO-CTCAE\)](#)

[Ethan Basch](#) and **[Lauren Rogak](#)** co-authored a manuscript with their co-investigators and the NCI PRO-CTCAE Study Group, including **[Narre Heon](#)** and **[Mary Shaw](#)**, in JAMA Oncology reporting their work to validate the PRO-CTCAE item library. The purpose of this research was to integrate the patient perspective into adverse event reporting, using the PRO-CTCAE item library. The results of this validation study suggest that PRO-CTCAE can achieve its intended aim of integrating the patient experience into routine clinical trial AE reporting, thereby augmenting the capacity for informed decision making.