



BIOSTATISTICS SEMINARS

All seminars are held from 4PM – 5PM
485 Lexington Ave, Conference Room B (2137)

- ❖ January 27, 2016 [Jaya Satagopan](#)
MSK
- ❖ February 3, 2016 [Yuelin Li](#)
MSK
- ❖ February 10, 2016 [Mithat Gonen](#)
MSK
- ❖ February 17, 2016 [Ronglai Shen](#)
MSK
- ❖ February 24, 2016 [Michael Daniels](#)
University of Texas
at Austin
- ❖ March 2, 2016 [Kristen Cunanan](#)
MSK
- ❖ March 16, 2016 [Alexia Iasonos](#)
MSK

HEALTH OUTCOMES RESEARCH GROUP SEMINARS

All seminars are held from 12PM – 1PM
485 Lexington Ave, Conference Room B (2137)
Please see email updates for speakers.

- ❖ January 22, 2016
- ❖ February 5, 2016
- ❖ February 19, 2016
- ❖ March 4, 2016

SURVIVORSHIP, OUTCOMES AND RISK PROGRAM SEMINAR SERIES

All seminars are held from 4PM – 5PM
1275 York Ave, M-107

- ❖ February 9, 2016 [Andrew Briggs, DPhil](#)
*Chair, Health Economics
Health Sector Management
University of Glasgow*
- ❖ March 8, 2016 [Cristian Tomasetti, PhD](#)
*Assistant Professor,
Department of Biostatistics
Johns Hopkins Bloomberg
School of Public Health*

EPIDEMIOLOGY SERVICE MEETINGS

All meetings will be held at 485 Lexington Ave,
2nd floor, Conference Room B (2137)
from 12:00pm – 1:00pm.

- ❖ February 1, 2016 [Ann Zauber](#)
MSK
- ❖ March 7, 2016 [Helena Furberg-Barnes](#)
MSK

EPI/BIO ONE MSK SITE GOES LIVE

The Epi-Bio OneMSK site will serve as a central resource for our faculty and staff to learn about recent news and information regarding the department. Find out about all of the upcoming seminars and events, and see what our fellow employees are posting on the newsfeed at <https://one.mskcc.org/sites/pub/epidemiostat/Pages/default.aspx>.



DEPARTMENT CHAIR

Colin Begg, PhD

EDITORS

Sharon Bayuga, MPH
Prusha Patel, MPH
Narre Heon
Lauren Rogak, MA
Mary Shaw
Amethyst Saldia
Shireen Lewis, MPA
Joseph Kanik

WELCOME ANDY NI!

[Andy Ni, PhD](#), recently joined the Department of Epidemiology and Biostatistics as an Assistant Attending Biostatistician. His methodological research interests are in the design and analysis of large-scale observational studies with survival outcomes. Andy is particularly interested in statistical methodologies related to case-cohort and nested case-control designs. His interests also lie in regularized variable selection in survival analysis with high-dimensional data. Andy is looking forward to collaborating with MSK clinical investigators in the Thoracic Oncology Service in the design and analysis of observational studies and clinical trials of different phases. Andy received his PhD from the Department of Biostatistics at the University of North Carolina at Chapel Hill. Prior to his PhD study, Andy worked as a biostatistician at the Children’s Hospital of Eastern Ontario in Ottawa, Canada.

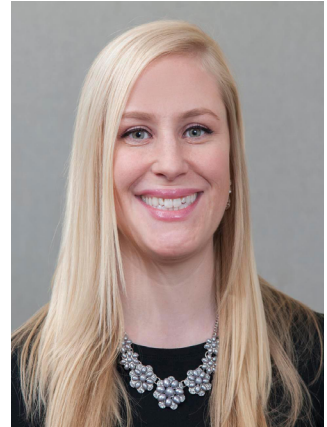


Andy Ni, PhD

PUBLICATIONS

[“Toxicity Attribution in Phase I Trials: Evaluating the Effect of Dose on the Frequency of Related and Unrelated Toxicities”](#)

[Anne Eaton](#) and [Alexia Iasonos](#) co-authored a manuscript in Clinical Cancer Research with investigators from MSK and CTEP that used pooled data from 38 NCI-sponsored phase I trials to explore the relationship between dose and toxicity in order to identify evidence of physician misattribution. Specifically, if no attribution error is present, the rate of drug-related toxicity should increase as dose increases and the rate of unrelated toxicity should remain constant across doses. Reassuringly, the results confirmed these expectations, although this should not be taken to mean that no attribution error is present, as attribution couldn’t be directly assessed due to the lack of a gold standard. The results also support simplifying attribution from a 5-tier system to a binary system when standard phase I trial designs with a binary DLT endpoint are used.



Anne Eaton, MS

[“Correlating Surrogate Endpoints with Overall Survival at the Individual Patient Level in BRAFV600E-Mutated Metastatic Melanoma Patients Treated with Vemurafenib”](#)

[Emily Zabor](#) and [Glenn Heller](#) co-authored a paper in Clinical Cancer Research that correlates tumor response and time to progression with overall survival in melanoma patients treated as part of a phase III trial. Time to progression defined as $\geq 50\%$ increase in the sum of tumor diameters or appearance of new tumors was more strongly correlated with overall survival than early tumor response. Findings were validated using separate data from a phase II trial.

[“Symptom Monitoring with Patient-Reported Outcomes During Routine Cancer Treatment: A Randomized Controlled Trial”](#)

[Ethan Basch](#), [Lauren Rogak](#), [Thomas Atkinson](#), and [Joanne Chou](#) co-authored a paper in the Journal of Clinical Oncology with their colleagues at MSK and several outside investigators reporting their work on symptom monitoring in routine cancer care using patient-reported outcomes in a large, single site, randomized trial. Participants were randomized to report 12 common symptomatic toxicities via tablet computers or to receive usual care consisting of symptom monitoring at the discretion of clinicians. This study showed that for adults who are receiving outpatient chemotherapy for advanced cancer, web-based symptom reporting with automated clinical e-mail alerts resulted in better Health-Related Quality of Life, improvements in health services outcomes, and survival.

STAFF PROMOTIONS

- ❖ **Siok (Jessie) Leong** promoted to Research Assistant
- ❖ **Elizabeth Fortier** promoted to Research Project Coordinator
- ❖ **Amethyst Saldia** promoted to Clinical Research Supervisor
- ❖ **Pamela Nunes** promoted to Research Study Assistant II
- ❖ **Narre Heon** promoted to Research Study Specialist

“ENERGIZE YOURSELF”

We have partnered with Integrative Medicine and Employee Wellness to offer a weekly class on how to “Energize Yourself.” This class takes place every Tuesday from 11:45 am to 12:30pm in the room behind Tania’s desk. Certified yoga instructor Janet Ware, teaches employees how to manage stress in a healthy way leading the group in deep breathing exercises, simple chair yoga and guide relaxation imagery. Come check out the class, no pre-registration necessary. Questions? Contact [Tania Celea](#)

INTER-DEPARTMENTAL Pedometer Challenge

From October 5 through October 29, 2015, **Tricia Neary** from Epidemiology & Biostatistics and **Rijul Kochar** from Immigrant Health Cancer Disparities organized an inter-departmental pedometer challenge. Two teams of approximately 20 staff members from each department participated. A congratulatory pizza celebration was thrown for all participants. In total, Epidemiology & Biostatistics walked 4,579,767 steps and Immigrant Health walked 4,039,849 steps. The top two walkers were **Xiaolin Liang** from Epidemiology with 364,426 steps and **Bharat Narang** from Immigrant Health with 439,002 steps. We are looking forward to our next inter-departmental challenge, suggestions for which are welcome!

GREEN TEAM CORNER

Let’s start off the New Year right, and make it the greenest year yet for our Department! You can help make a difference by participating in the **Computer Shutdown Program**. Schedule your workstation to power on and off according to your personal schedule for annual savings of nearly \$100 per computer. Every hour of shutdown counts! Our department shutdown rate is only at 69%, let’s try to reach the institutional goal of at least 90% for each department! Contact **Annie Yang** or the **Green Team** with any questions.

RESTAURANT RECOMMENDATIONS

Hop Won Express: Tasty take-out Chinese food for your Chinatown fix in Midtown! Try a combination lunch special, or one of the roast meat and rice meals (think: juicy roast pig with crispy skin) which happens to come with zucchini. *139 E 45th St at Lexington Ave*

Chicken Provence: Take a little walk down to this casual French spot for rotisserie chicken meals. Choose a half or quarter chicken and sides, a baguette sandwich, brown rice bowl, or salad. Don’t forget to add spicy harissa and Swiss cheese! *154 E 39th St btw Lexington and 3rd Aves*

NEW STAFF

Sergio Corrales Guerrero, Research Technician

Sergio is excited to join the department as a Research Technician for [Dr. Irene Orlow’s](#) group. He received a BS in Biology from the Universidad de Navarra (Spain) in 2014 and an MSc in Cancer Research and Molecular Biomedicine from The University of Manchester (UK) in 2015.



Bobak Hedayati, Research Technician

Bobak received his pre-medical diploma from Columbia University in 2015 and his BS in Business Administration before that. His past experiences in laboratory settings include assisting in research in the departments of neurosurgery and surgery at the University of Southern California. He has joined the Molecular Epidemiology Laboratory as a Research Technician in November 2015, and supports the laboratory research needs of [Dr. Irene Orlow](#). He is involved in studies designed to identify genetic and phenotypic factors that increase the risk to develop cancer, or that are associated with cancer, or burden of cancer and cancer treatment.



Andrew Briggs, Visiting Investigator

Andrew Briggs (DPhil) is a Health Economist from University of Glasgow where he was responsible for the Health Economics and Health Technology Research Group. He has an interest in statistical methodology applied to health economic evaluation and in the relationship between individual patient data (clinical trial and real world) evidence and decision analytic modeling. He has particular interests in using statistical/epidemiological methods for capturing heterogeneity in cost-effectiveness evidence with application to stratified medicine. He is working with [Dr. Peter Bach](#) and the Health Policy Center, but is hoping to strike up other potential collaborations with interested colleagues at MSK and to learn more about the practical workings of the US health system.



Nancy Yu, Consultant

Nancy Yu recently joined the Center for Health Policy and Outcomes as a consultant with over ten years of experience in the healthcare investment industry. She worked for nine years at Morgan Stanley, was the global pharmaceutical analyst at Magnetar Capital, and served as COO at ViaBay Capital, a startup healthcare investment fund. Prior to her Wall Street career, Nancy was a manager in the China Consulting Group at Coopers & Lybrand Consulting and has also served as an adjunct instructor in Business at Concordia College in New York. Nancy earned an AB from Duke University and holds an MBA and a Masters in Asian Studies from the University of Michigan.



STAFF ACHIEVEMENTS

On October 20, 2015, [Emily Zabor](#) and [Anne Eaton](#) hosted 20 Grinnell College undergraduates who were participating in an industry tour related to data, analysis, technology, and applications (DATA) over their fall break. As alumni of Grinnell College, Emily and Anne gave a tour of the office and talked to the students about how they came to work in a DATA field, the training and skills required to work in biostatistics, the work they now do as research biostatisticians, and what skills they gained as undergraduates at Grinnell that prepared them for a career in a DATA field.



[Dr. Jonine Bernstein](#) hosted the annual IMAGINE Study on November 17, 2015 and the semi-annual WECARE Study meeting on December 9-10, 2015. Over 35 MSK staff, faculty, and external collaborators from across the US and abroad participated in these meetings. With [Meg Woods](#) supervising the entire planning and logistics, [Sami Noor](#) and [Tricia Neary](#) were instrumental in making sure the meetings were a success from the initial stages to providing on-site support during the meeting. This was truly a team effort!

PRESENTATION

[Liz Fortier](#) presented a poster “Streamlining care for complex cancer survivors: A protocol” at the Cancer Survivorship Research Symposium. The poster describes the IRB Study #15-245 led by [Talya Salz](#) and [Shrujal Baxi](#), which aims at improving survivorship care for head and neck cancer survivors. They developed an online tool (HN-STAR) that synthesizes patient-reported outcomes, clinical details, and evidence-based guidelines to provide a personalized survivorship care plan for patients. They are currently testing the usability and feasibility of HN-STAR among head and neck cancer survivors at MSK and Hartford HealthCare.

THERE WILL A SPECIAL HOLIDAY EDITION OF THE BEACH NEWSLETTER COMING SOON!