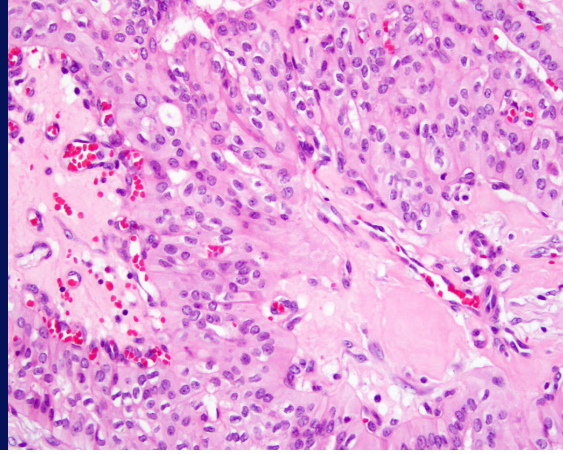




Memorial Sloan Kettering  
Cancer Center

# Breast Pathology Fellowship



The Department of Pathology and Laboratory medicine at Memorial Sloan Kettering Cancer Center offers four 1-year Breast Pathology Fellowship positions. All fellows should have completed residency training in anatomic pathology and be certified/eligible for certification by the American Board of Pathology or Royal College of Physicians and Surgeons of Canada. Foreign medical graduates who meet the eligibility requirements may apply for the International Breast Pathology Fellowship.

The fellowship provides in-depth training in the pathologic diagnosis of neoplastic and non-neoplastic breast diseases. The breast pathology fellow works closely with a cadre of breast pathology experts and actively participates in the diagnostic activities. Our breast pathology team handles over 18,000 cases a year. The volume and complexity of our cases provide a unique learning environment under the supervision of experienced faculty. The breast pathology fellow presents at the multidisciplinary conference and radiologic-pathologic correlation conference. The curriculum includes rotations in breast surgery and radiation oncology. Each fellow conducts clinical and/or translational research projects under the

**Number of Positions:** 4

**Length of Program:** 1 year  
(starting July 1st)

**How to Apply:** Only online applications will be considered. Three recommendation letters are required. Early application is strongly encouraged.

<https://mskcc.embark.com/login/apply?target=pathology>

**Contact:**

Angelica Angel and Sheila Vazquez,  
*Department of Pathology and  
Laboratory Medicine, Memorial  
Sloan Kettering Cancer Center*

212-639-7102

[pthfellows@mskcc.org](mailto:pthfellows@mskcc.org)

**For More Information Visit:**

[https://www.mskcc.org/  
departments/pathology-  
laboratory-medicine/fellowships](https://www.mskcc.org/departments/pathology-laboratory-medicine/fellowships)

Or scan the  
QR code →



supervision of faculty members and present the studies at national meetings.

## Goals and Objectives

- Gain experience in the diagnosis of neoplastic and non-neoplastic lesions of the breast and biomarker assessment
- Comprehend the clinical features of breast diseases, including diagnostic and treatment algorithms, staging parameters and prognostic indices
- Develop an appreciation of the multidisciplinary team approach for the treatment of patients with breast disease
- Learn to integrate molecular pathology in the diagnosis and management of patients with breast malignancies
- Acquire knowledge and skills for independent sign-out
- Enhance teaching and communication skills
- Gain knowledge of research methodology and the use of analytical methods and experimental techniques in research projects

## Responsibilities

The breast pathology fellow will review slides and prepare reports for selected in-house and submitted consultation cases, with increasing autonomy as the fellowship progresses. Responsibilities also include supervision of trainees, pathologist assistants and rotating visitors, and participation in intradepartmental teaching conferences and journal club presentations. The fellow will present cases at the weekly multidisciplinary breast conference, monthly radiologic-pathologic correlation conference, and attend the intradepartmental breast pathology consensus conferences. The breast pathology fellow is required to engage in research projects under the guidance of the attending faculty.

## Faculty

**Hannah Y. Wen, MD, PhD**

*Director, Breast Pathology Fellowship*

**Edi Brogi, MD, PhD**

*Director, Breast Pathology Service*

**Marcia Edelweiss, MD**

**Dilip D. Giri, MD, FACP**

**Anne Grabenstetter, MD**

**Matthew Hanna, MD**

**Maria G. Kuba, MD**

**Melissa P. Murray, DO**

**Fresia Pareja, MD, PhD**

**Dara Ross, MD**

**Christopher Schwartz, MD**

**Lee K. Tan, MD**

**Christina E. Vallejo, MD**

**Hong (Amy) Zhang, MD, PhD**